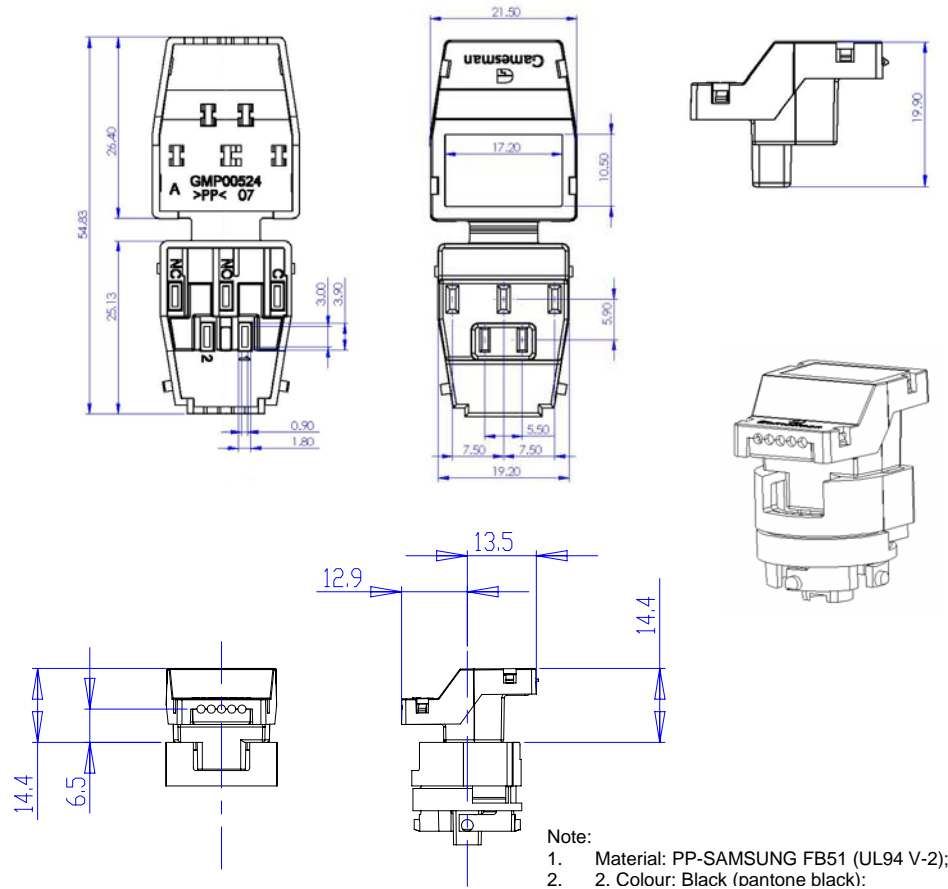


### Connector Housing Details:



### Terminal Details:

FASTON Un-insulated Receptacles - 1544358-1

- Product Type = Receptacle
- Product Description = Clip 2.8, Drap.0.2
- Tab Fit (mm [in]) = 2.79 x 0.50 [.110 x .019]
- Receptacle Style = Flag
- Insulation Support = Insulation Support
- Wire/Cable Type = Stranded
- Insulation Diameter (mm [in]) = 2.50 [.098] Max.
- Insertion Force = Low
- Material = Brass
- Crimp Type = F-Crimp
- Orientation Angle = Right Angle
- Wire Range (mm [AWG]) = 0.75<sup>2</sup> [18.5]
- RoHS/ELV Compliance = RoHS compliant, ELV compliant
- Lead Free Solder Processes = Not relevant for the lead free process

Note: Crimp tooling is required for securing cables to the terminals.



For further information please visit <http://www.tycoelectronics.com>



The Gamesman Connector is for use with:  
 System Y (with AND without cut-out)  
 System U2  
 System U3  
 System K1  
 System K3.

### Ordering Details:

To order the Gamesman Connector please refer to the following part numbers:

Housing Part Number – GMP00524-BK

Housing Terminal Part Number – GPP00526

### GAMESMAN LTD

CROMPTON FIELDS, CROMPTON WAY, CRAWLEY, WEST SUSSEX, RH10 9QB

TEL: +44 (0) 1293 418888 FAX: +44 (0) 1293 418880

REGISTERED IN ENGLAND NO. 3027138

Website: [www.gamesman.co.uk](http://www.gamesman.co.uk) - E-mail: [sales@gamesman.co.uk](mailto:sales@gamesman.co.uk)

### Disclaimer:

The information provided within this product specification is intended only to make the reader aware of the product's technical data and its use thereof. As such, Gamesman Ltd shall not be held liable for any loss or damage to the assembly or component within, arising from its misuse or from the unintended use of information or particulars included within, or any omission from, this document.

Design and specifications are subject to change without notice. Failure to observe the interface requirements specified in this document may result in damage to the electronics and resultant performance characteristics of the product.